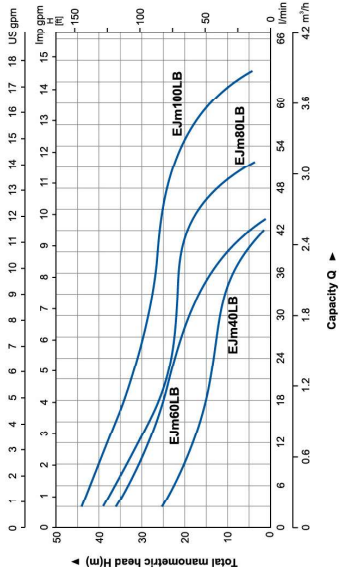
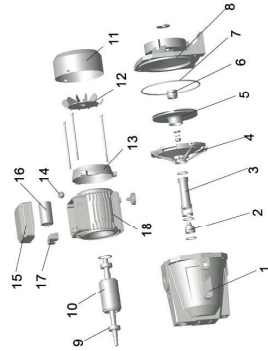



EJm
HYDRAULIC PERFORMANCE CURVE

Pump

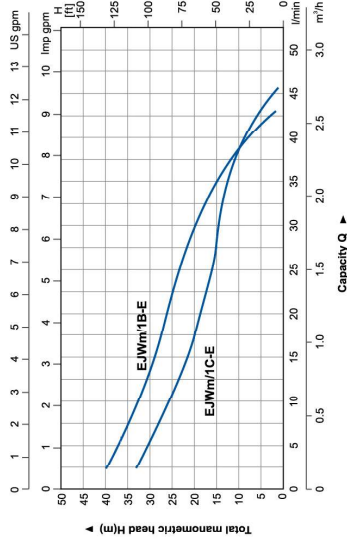
- Transfer of clean water or non-aggressive liquid
- Special anti-rust treatment for pump body and support
- PPO impeller
- AISI 304 shaft
- Max. liquid temperature: +60°C
- Max. suction: +9 m

Motor

- Copper winding
- Built-in thermal protector for single phase motor
- Insulation class: F
- Protection class: IPX4
- Max. ambient temperature: +40°C



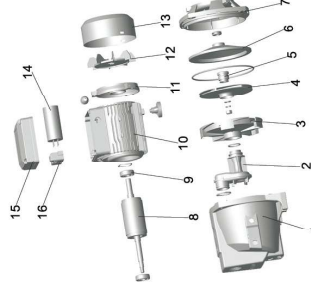
Part	Material	Remark
1	Pump body	Cast iron
2	Nozzle	PPO
3	Runner body	PPO
4	Water outlet cover	PPO
5	Impeller	PPO
6	Mechanical seal	Ceramic/Carbon
7	Sealing ring	NBR
8	Support	Cast iron
9	Bearing	E-coating
10	Rotor	Welded stainless steel shaft
11	Fan cover	Iron
12	Fan	PP
13	End plate	Aluminum
14	Outlet nozzle	NBR
15	Cover box	ABS
16	Capacitor	
17	Terminal	
18	Stator	Aluminum casting

HYDRAULIC PERFORMANCE CURVE

EJWm
Pump

- Transfer of clean water or non-aggressive liquid
- Special anti-rust treatment for pump body and support
- Stainless steel impeller
- AISI 304 shaft
- Max. liquid temperature: +60°C
- Max. suction: +9 m

Motor

- Copper winding
- Built-in thermal protector for single phase motor
- Insulation class: F
- Protection class: IPX4
- Max. ambient temperature: +40°C



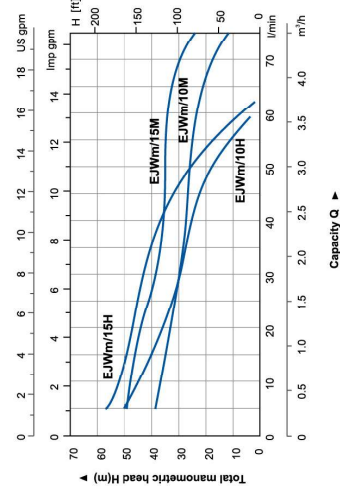
MODEL	POWER (kW)	POWER (HP)	INLET/OUTLET	MAX.FLOW (l/min)	MAX.FLOW (m³/h)	MAX.HEAD (m)	MAX.SUCT (m)
EJWm/1CE	0.37	0.5	1" x 1"	46	35	9	9
EJWm/1BE	0.5	0.7	1" x 1"	46	42	9	9

Part	Material	Remark
1	Pump body	Cast iron
2	Venturi tube	PPO
3	Discharge cover	PPO
4	Impeller	Brass/PPO/Stainless steel
5	Mechanical seal	Ceramic/Carbon
6	Bracket cover	Stainless steel
7	Support	Aluminum
8	Rotor	Welded stainless steel shaft
9	Bearing	
10	Stator	Aluminum casting
11	End plate	Aluminum
12	Fan	PP
13	Fan cover	Iron
14	Capacitor	
15	Cover box	ABS
16	Terminal	



EJWm

HYDRAULIC PERFORMANCE CURVE

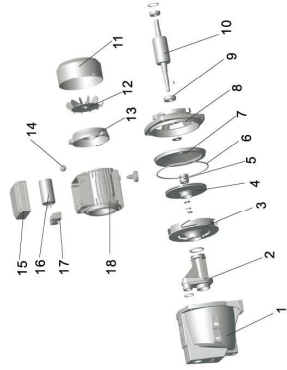


Pump

- Transfer of clean water or non-aggressive liquid
- Special anti-rust treatment for pump body and support
- Stainless steel impeller
- AISI 304 shaft
- Max. liquid temperature: +60°C
- Max. suction: +9 m

Motor

- Copper winding
- Built-in thermal protector for single phase motor
- Insulation class: F
- Protection class: IPX4
- Max. ambient temperature: +40°C

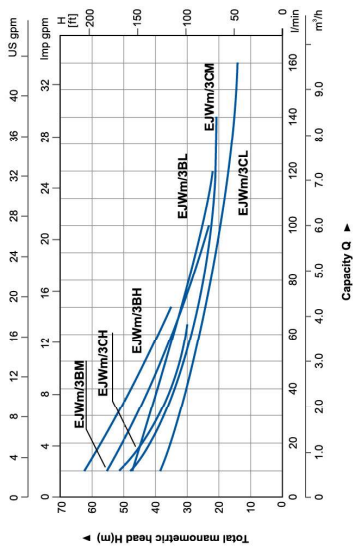


Part	Material	Remark
1	Pump body	Cast iron
2	Venturi tube	PPO
3	Water outlet cover	PPO
4	Impeller	PPO
5	Mechanical seal	Ceramic/Carbon
6	Sealing ring	NBR
7	Bracket cover	Stainless steel
8	Support	Aluminum
9	Bearing	
10	Rotor	Welded stainless steel shaft
11	Fan cover	Iron
12	Fan	PP
13	Enc plate	Aluminum
14	Outlet nozzle	NBR
15	Cover box	ABS
16	Capacitor	
17	Terminal	
18	Stator	Aluminum casting



EJWm

HYDRAULIC PERFORMANCE CURVE

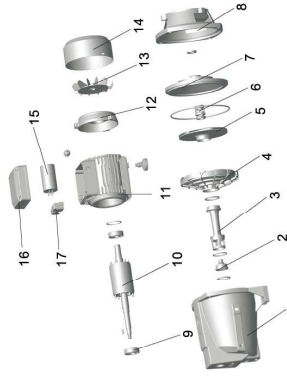


Pump

- Transfer of clean water or non-aggressive liquid
- Special anti-rust treatment for pump body and support
- Stainless steel impeller
- AISI 304 shaft
- Max. liquid temperature: +60°C
- Max. suction: +9 m

Motor

- Copper winding
- Built-in thermal protector for single phase motor
- Insulation class: F
- Protection class: IPX4
- Max. ambient temperature: +40°C



MODEL	POWER (kW)	POWER (HP)	INLET/OUTLET	MAX.FLOW (l/min)	MAX.HEAD (m)	MAX.SUCT (m)
EJWm/3CH	1.1	1.5	1 1/2" x 1"	80	64	9
EJWm/3CM	1.1	1.5	1 1/2" x 1"	140	52	9
EJWm/3CL	1.1	1.5	1 1/2" x 1"	180	44	9
EJWm/3BH	1.5	2.0	1 1/2" x 1"	70	66	9
EJWm/3BM	1.5	2.0	1 1/2" x 1"	100	59	9
EJWm/3BL	1.5	2.0	1 1/2" x 1"	120	51	9

Part	Material	Remark
1	Pump body	Cast iron
2	Nozzle	PPO
3	Internal channel	PPO
4	Discharge cover	PPO
5	Impeller	Brass/Stainless steel
6	Mechanical seal	Ceramic/Carbon
7	Bracket cover	Cast iron
8	Support	Aluminum casting
9	Bearing	
10	Rotor	Welded stainless steel shaft
11	Stator	Aluminum casting
12	End plate	Aluminum
13	Fan	PP
14	Fan cover	Iron
15	Capacitor	
16	Cover box	ABS
17	Terminal	